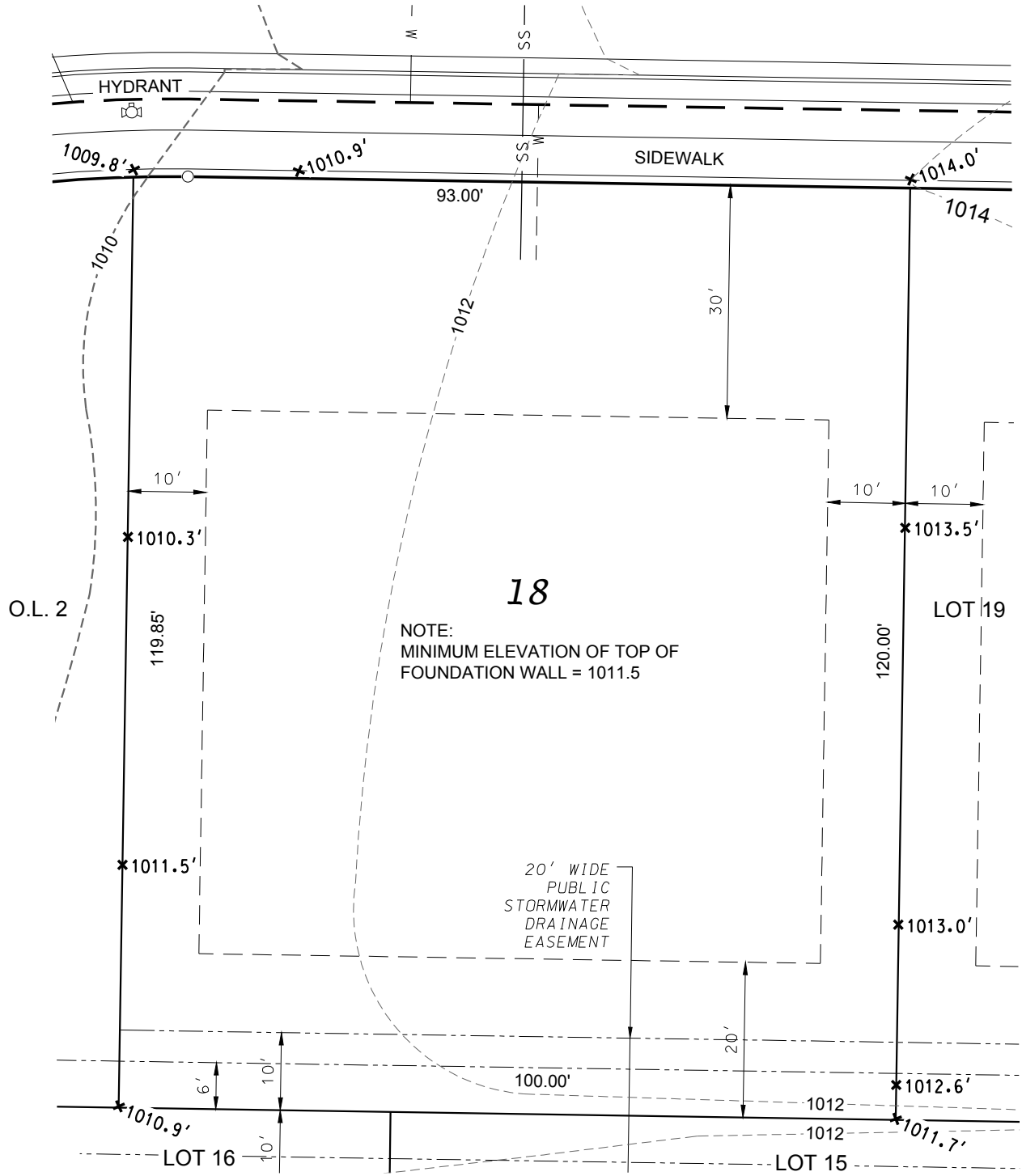


LOT 18 - AUTUMN RIDGE

SIENNA GLENN WAY

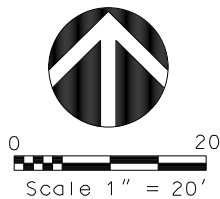


LEGEND

- BUILDING ENVELOPE
- - - UTILITY EASEMENT
- *1010.3' PROPOSED LOT ELEVATION
ALONG PROPERTY LINE

D'ONOFRIO KOTTKE AND ASSOCIATES, INC.

7530 Westward Way, Madison, WI 53717
Phone: 608.833.7530 • Fax: 608.833.1089
YOUR NATURAL RESOURCE FOR LAND DEVELOPMENT



DATE: 07-11-19
REV.

F.N.: 17-05-120

DRAWN BY: KRG

U:/USER/1705120/DRAWINGS/LOT DETAILS.DWG