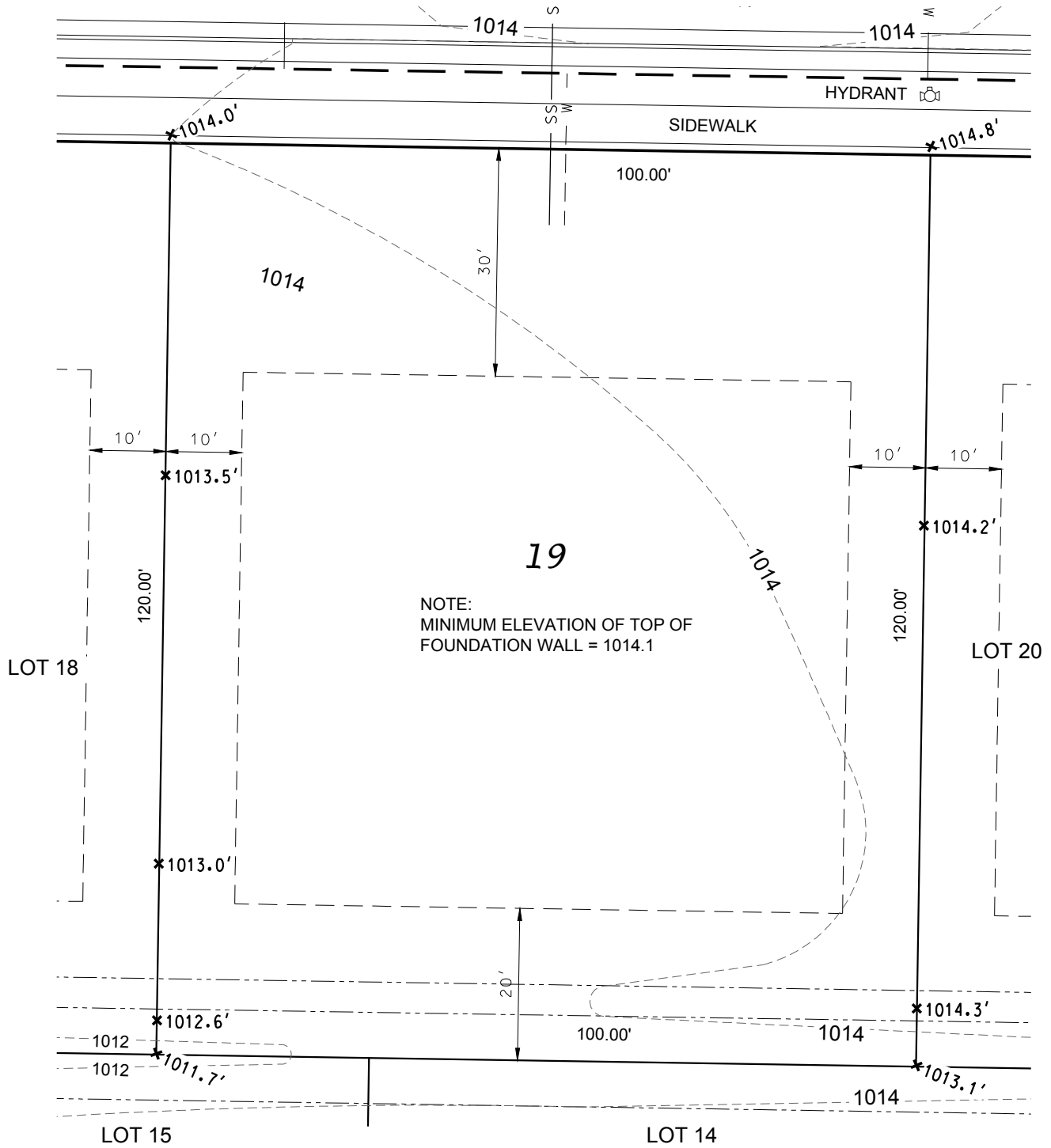


# LOT 19 - AUTUMN RIDGE

## SIENNA GLENN WAY

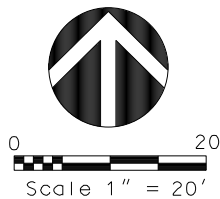


### LEGEND

- BUILDING ENVELOPE
- - - UTILITY EASEMENT
- \*1010.3' PROPOSED LOT ELEVATION  
ALONG PROPERTY LINE

**D'ONOFRIO KOTTKE AND ASSOCIATES, INC.**

7530 Westward Way, Madison, WI 53717  
Phone: 608.833.7530 • Fax: 608.833.1089  
YOUR NATURAL RESOURCE FOR LAND DEVELOPMENT



DATE: 07-11-19  
REV.

F.N.: 17-05-120

DRAWN BY: KRG