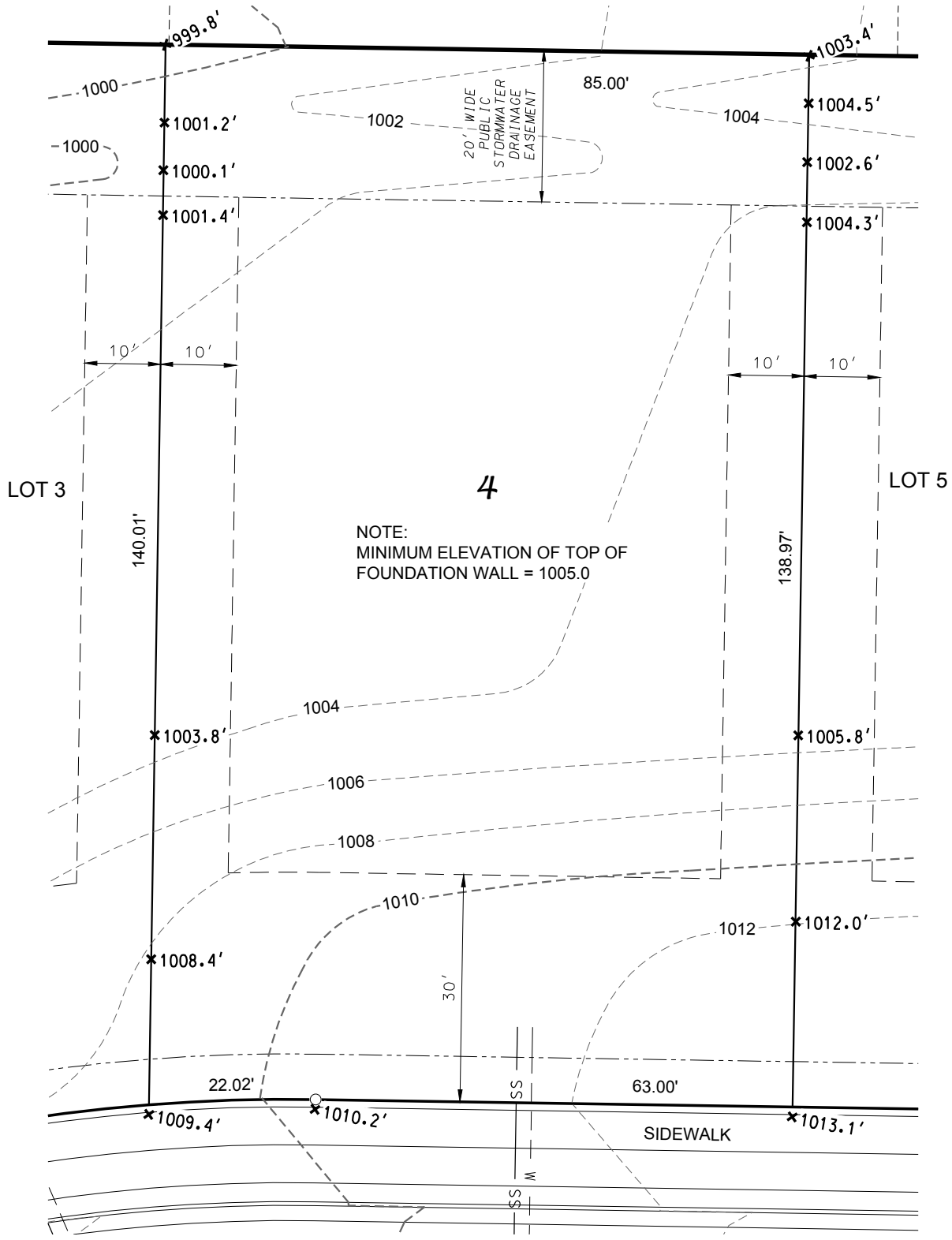


LOT 4 - AUTUMN RIDGE



SIENNA GLENN WAY

LEGEND

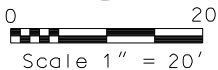
- BUILDING ENVELOPE
- UTILITY EASEMENT
- *1010.3' PROPOSED LOT ELEVATION
ALONG PROPERTY LINE



D'ONOFRIO KOTTKE AND ASSOCIATES, INC.

7530 Westward Way, Madison, WI 53717
Phone: 608.833.7530 • Fax: 608.833.1089

YOUR NATURAL RESOURCE FOR LAND DEVELOPMENT



DATE: 07-11-19
REV.

F.N.: 17-05-120

DRAWN BY: KRG