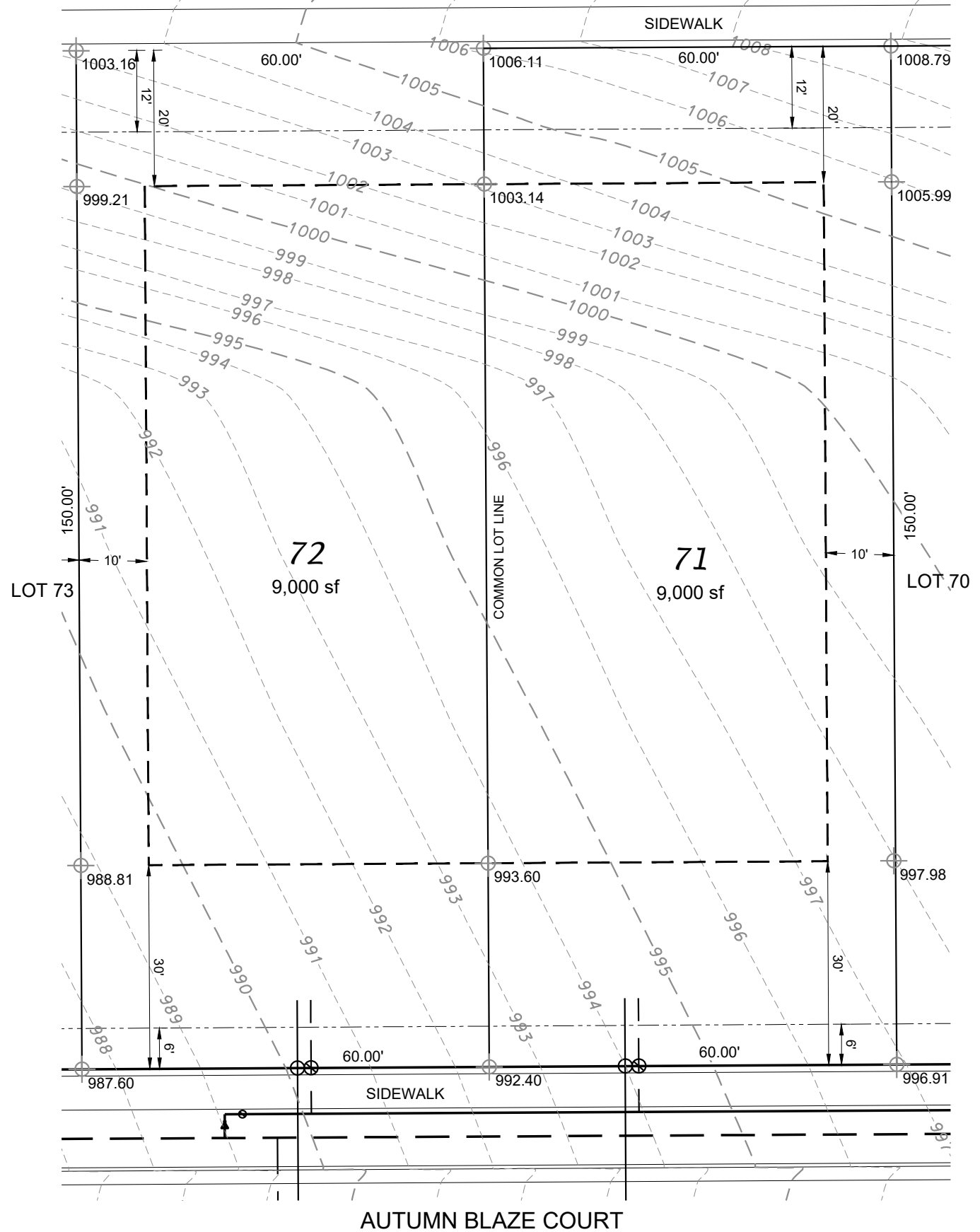


LOTS 71/72 - 2ND ADDITION TO AUTUMN RIDGE

COUNTY HWY MM



NOTE:
MINIMUM ELEVATION OF TOP OF
FOUNDATION WALL = 989.5

LEGEND

- BUILDING ENVELOPE
- UTILITY EASEMENT
- WATER LATERAL
- SANITARY LATERAL
- 1010.96
- EXISTING LOT ELEVATION
ALONG PROPERTY LINE

D'ONOFRIO KOTTKE AND ASSOCIATES, INC.

7530 Westward Way, Madison, WI 53717
Phone: 608.833.7530 • Fax: 608.833.1089
YOUR NATURAL RESOURCE FOR LAND DEVELOPMENT



0 20
Scale 1" = 20'

DATE: 02-12-24
F.N.: 22-05-143
DRAWN BY: DWS