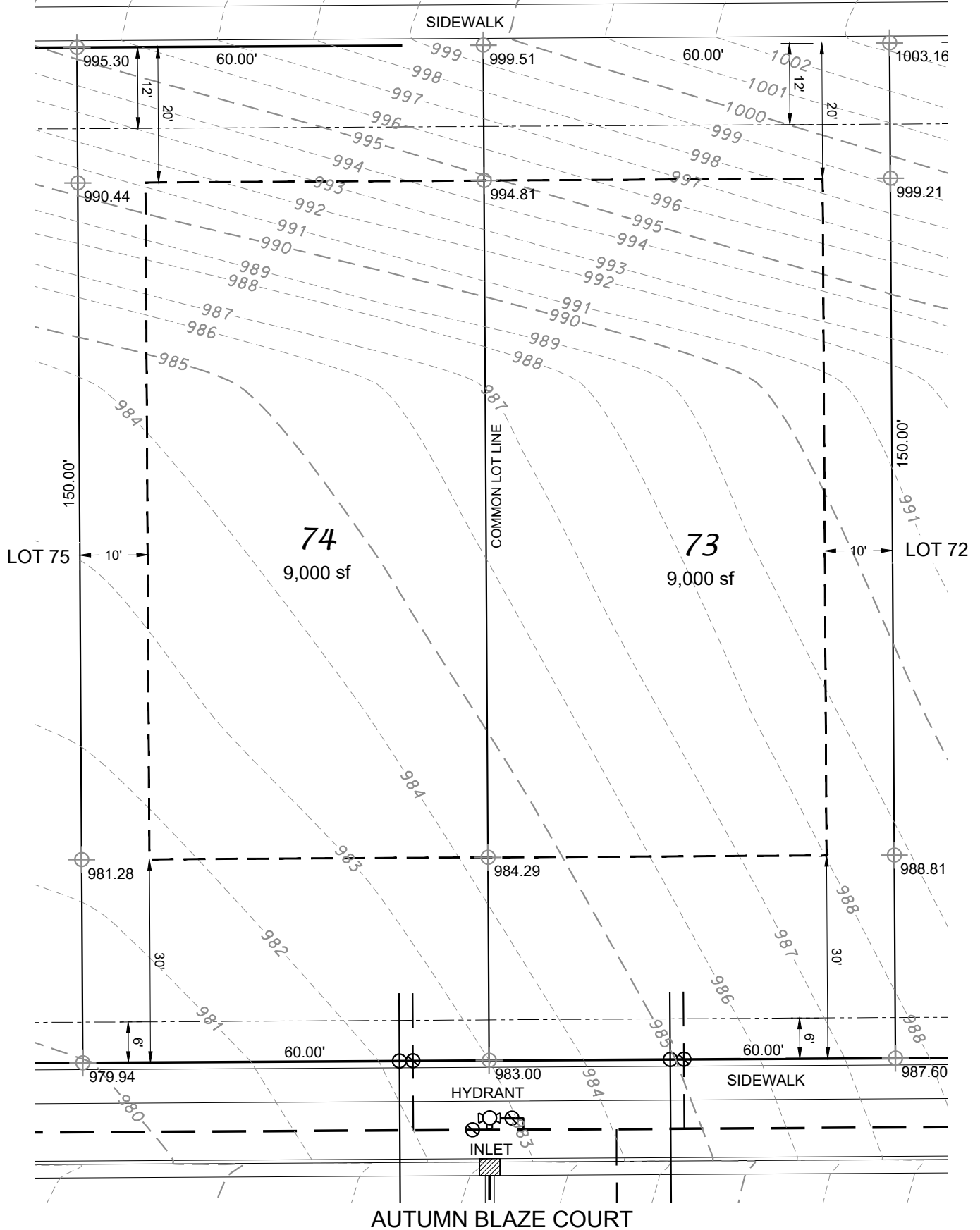


LOTS 73/74 - 2ND ADDITION TO AUTUMN RIDGE

COUNTY HWY MM



NOTE:
MINIMUM ELEVATION OF TOP OF
FOUNDATION WALL = 982.0

LEGEND

- BUILDING ENVELOPE
- - - UTILITY EASEMENT
- W - WATER LATERAL
- - - SANITARY LATERAL
- ⊕ 1010.96 EXISTING LOT ELEVATION
ALONG PROPERTY LINE



D'ONOFRIO KOTTKE AND ASSOCIATES, INC.
7530 Westward Way, Madison, WI 53717
Phone: 608.833.7530 • Fax: 608.833.1089
YOUR NATURAL RESOURCE FOR LAND DEVELOPMENT



0 20
Scale 1" = 20'

DATE: 02-12-24
F.N.: 22-05-143
DRAWN BY: DWS