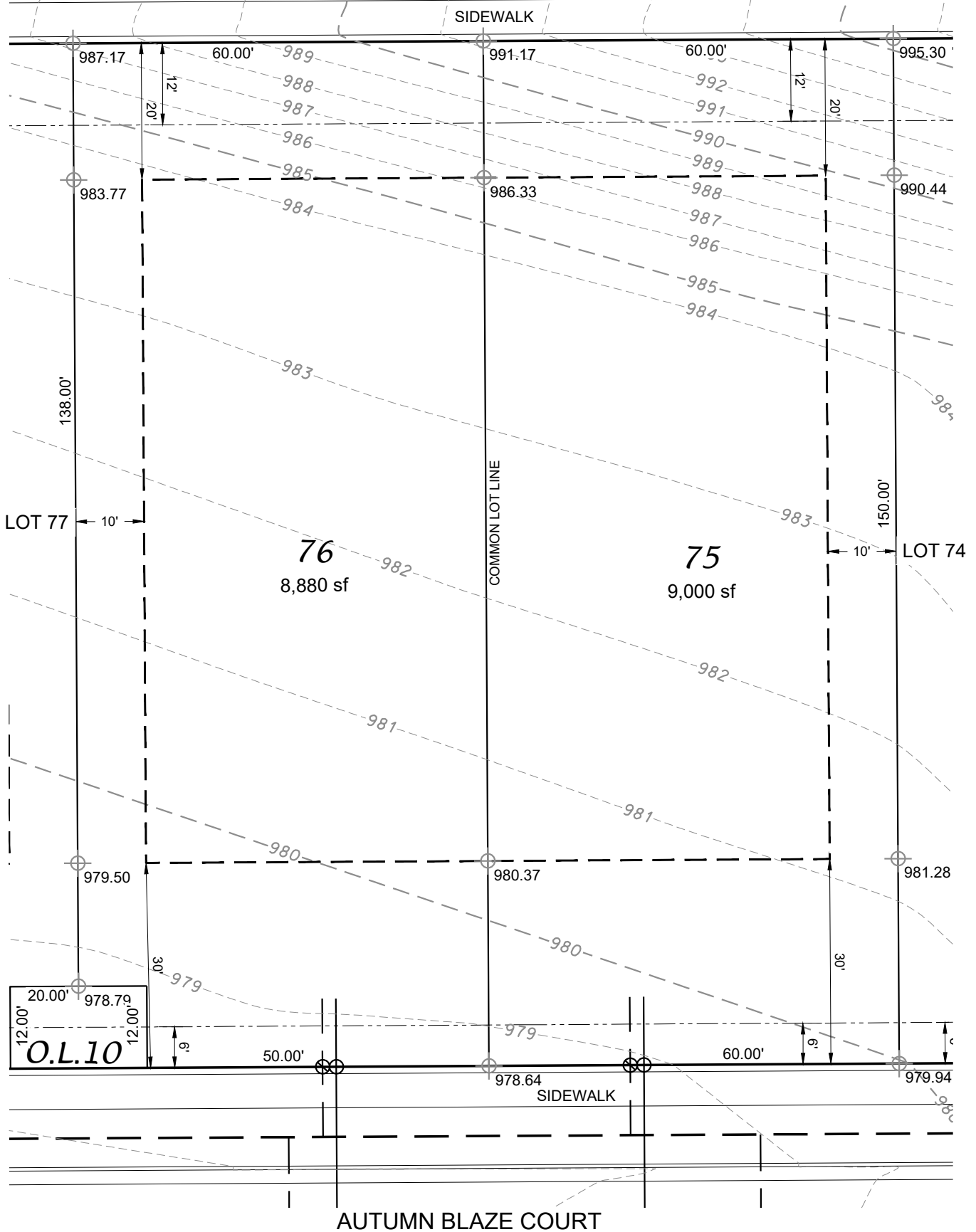


# LOTS 75/76 - 2ND ADDITION TO AUTUMN RIDGE

COUNTY HWY MM



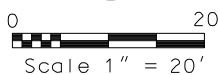
NOTE:  
MINIMUM ELEVATION OF TOP OF  
FOUNDATION WALL = 980.2

LEGEND

- BUILDING ENVELOPE
- - - UTILITY EASEMENT
- W - WATER LATERAL
- SANITARY LATERAL
- ⊕ 1010.96 EXISTING LOT ELEVATION  
ALONG PROPERTY LINE

**D'ONOFRIO KOTTKE AND ASSOCIATES, INC.**

7530 Westward Way, Madison, WI 53717  
Phone: 608.833.7530 • Fax: 608.833.1089  
YOUR NATURAL RESOURCE FOR LAND DEVELOPMENT



DATE: 02-12-24  
F.N.: 22-05-143  
DRAWN BY: DWS